



# Ralston Out of School Care Newsletter

May 2010

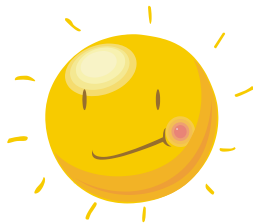
## Welcome

Welcome to the Ralston Out of School Care newsletter. We had another great Easter Play-scheme over the holidays and we are now looking forward to the summer. (lets hope its a nice one!) With a successful fundraising night behind us, we are now concentrating on this years summer show.

Don't forget to return your registration and standing order forms as soon as possible. If you have not received these please contact me.

All the latest information can be found on our website [www.ros.org.uk](http://www.ros.org.uk)  
As always please do not hesitate talk to me or my staff if you have any questions or comments.

Grace Berry  
ROSC Manager



## Dates for your Diary



We have managed to secure the church hall to run the service when the school is unavailable. The service will be run from St Marks church hall on the following dates:

**Thursday and Friday 27th, 28th May**

The service will be closed for the Bank Holiday on

**Monday 31st May**

## Race Night

The latest race night was a great success. We raised a fantastic £700. All those attending had a great time and a big thank you to all those who helped plan, run and supported the event. We are concerned that we are not offering the right kind of fundraising. To this end we are sending out feedback forms, so please return them so we can plan any future events.



## How to contact us

In order to make it easier to contact us at ROSC we now have three mobile phones. The numbers below are the best way to contact us during out of school care hours.

Mobile 1      07969277543  
Mobile 2      07969279233  
Mobile 3      07969269110

ROSC office with answer machine:0141 882 5230  
Grace Berry Mobile:                      07932005224

Ralston Out of School Care  
C/o Ralston Primary  
School Road, Paisley  
Paisley PA1 3AT

email: [graceberry60@hotmail.com](mailto:graceberry60@hotmail.com)  
Website: [www.ros.org.uk](http://www.ros.org.uk)





## Who's Who?

Just so you know who's who!

Grace Berry	Manager
Lynne Fulton	Deputy Manager
Jacqueline Allison	Senior childcare worker
Liz McCloy	Childcare worker
Amanda Clark	Childcare worker
Stephen Caveney	Childcare worker
Charlene Kerr	Childcare worker
Stacey Norwood	Childcare worker
Jacqui Bell	Childcare worker (maternity leave)



## Important Health and Safety Announcements

Due to a number of incidents in the car park we have made changes to the procedure for collecting children from out of school care. When collecting children by car please use the rear car park accessed through the second gate past the school. The gate giving access to the front car park will be closed and children will not be allowed to leave via this route. As I am sure you understand this is for the safety of your children and we thank you for your co-operation in this matter



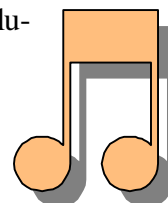
## Summer Playscheme

The summer playscheme will run from Wednesday 30th June to Tuesday 17th August. As always certain days over the summer fill vey quickly, so please return your forms with the dates you require as soon as possible. We have a great range of activities and trip planned for the summer, all we need now is some summer



## Summer Show

This years summer show will be on the Thursday 24th June. This year the theme is the Evolution of dance. We are building on the success of the show last year, so look out for singing, dancing and who know what else! Rehearsals are 7th and 8th June, please be patient when picking children up from aftercare as their rehearsals may run on.



## Committee

The committee are responsible for supporting the manager in the operation of the service. They are:

**Chairperson:** Fergal McCauley

**Vice Chair:** Pauline Dolan **Treasurer:** Mari Everett

**Secretary:** Angela Booth

**Committee members:** Irene Carswell, Caroline Luck, Gary McCallum, Brian Polding-Clyde, Susan Polding-Clyde